



67 West Bellevue Drive, Pasadena, CA 91105  
 626-792-5940 fax 626-683-5460  
 www.thewaverlyschool.org

### DATES TO REMEMBER/THINGS TO DO

- Friday, May 14: Coffee with Heidi, 9:00 a.m.; ES Community Room
- Saturday, May 15: Farm Work Day
- Saturday, May 15: High School Prom; HS Campus
- Tuesday, May 25: Varsity Sports Awards, 6:00 p.m.; Avery Dennison
- Thursday, May 27: Rock Concert; HS Campus
- Friday, May 28: Faculty Work Day; No School
- Monday, May 31: Memorial Day; No School
- Thursday, June 3: Middle School Sports Awards, 3:30 p.m.; MS Campus

### ALL SCHOOL

#### IMPORTANT DATES FOR THE 2010-2011 SCHOOL YEAR

First Day of School September 7, 2010	Thanksgiving Holiday November 24-26, 2010
Winter Break December 16, 2010 - January 3, 2011	Martin Luther King, Jr. Holiday January 17, 2011
Presidents' Day Holiday February 21, 2011	Spring Break March 18, 2011 – March 25, 2011
ES Last Day of School June 8, 2011	MS/HS Last Day of School June 9, 2011

#### VOLLEYBALL UPDATE

Congrats to our Varsity Boys' Volleyball team on their exciting win on Wednesday against Mesrobian. The match went five sets. The Ravens lost the first two sets, but did not let that get them down. Instead, they came back with a convincing third set win. Energized, the boys went on to win the fourth and take it to the deciding fifth set. The Ravens pulled together and played some of their best team volleyball, winning 15-7 in the fifth and final set. What a great finish to the season! Best of all, everyone is committed to returning next year! Special thanks go to eleventh grader Teagan; she stepped up as both an extra player and as a cheerleader for the team. GO RAVENS!

-Janice Bini, Athletic Director

#### SUMMER SCHOOL OPTION FOR GRADES 6-12

Aren't field trips the best? Students in the Waverly summer school field trip class will spend two weeks going on field trips throughout Los Angeles County this July. At the same time, they will build skills that will help them succeed in school. Students will collect video, photographs, and interviews during each field trip. They will then use that information to write articles and create an online, multimedia newspaper.

The field trips will include:

- Los Angeles Times building and printing facility
- Los Angeles Sparks WNBA basketball game
- Rancho Cucamonga Quake minor league baseball game
- Griffith Park Observatory and Planetarium show
- Japanese American National Museum
- Cooking lesson at a local culinary institute (*cont. p.2*)



The course, taught by middle school teachers Billy Hackett and Bennel Thompkins, will meet from July 12 -July 22. It is open to all students who will enter grades 6 -12 in the fall. Interested? Visit <http://www.thewaverlyschool.org/summerschool.html> for an enrollment form.

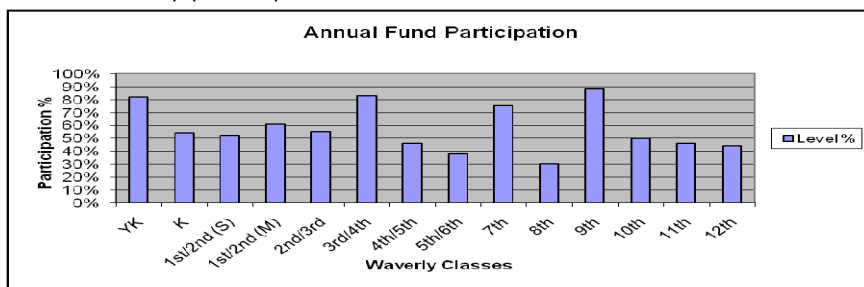
### UPCOMING FILM SCREENING

*Race to Nowhere*, a documentary film "examining the pressures faced by youth, teachers, and parents in our achievement obsessed education system and culture," is being screened on Monday, May 24, 2010 at 7:00 p.m. at St. James Parish Day School and Episcopal Church (1325 Monterey Road, South Pasadena). The screening is likely to sell out, so buy your tickets soon. Tickets are \$15 and can be purchased at [www.racetonowhere.com/upcoming-screenings](http://www.racetonowhere.com/upcoming-screenings). To learn more information about the film, visit the website at [www.racetonowhere.com](http://www.racetonowhere.com) or pick up a flyer in the ES lobby.

### ANNUAL FUND

2009-2010 Annual Fund Goal: \$275,000

- Dollars raised as of 5/6/2010: \$192,314.21 (includes pledges)
- Overall family participation to date: 56.44%



Class Participation Bar Graph



## HIGH SCHOOL

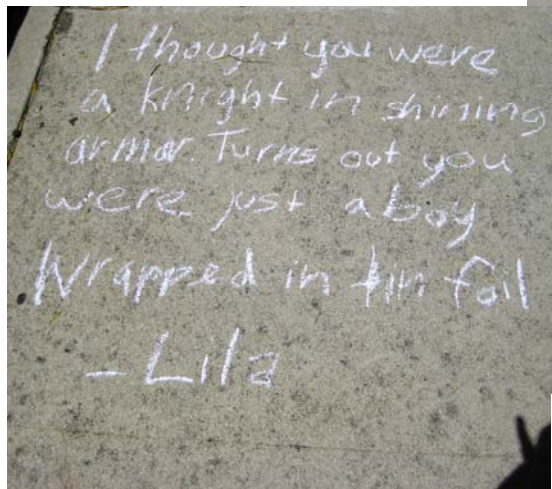
### MUSIC THIS WEEKEND

Our very own Sharon Kunde and her husband, Pete Kalmus, will perform tomorrow night, May 8, at the UnUrban Cafe (3301 Pico Blvd) in Santa Monica. Sharon and Pete are scheduled to go on around 8:30 p.m. during the music showcase. The event is free and all are welcome. To hear some of Pete and Sharon's music, go to [www.myspace.com/petekalmus](http://www.myspace.com/petekalmus).

## MIDDLE SCHOOL

### TAKIN' TO THE STREETS

The middle school's creative writing class took to the sidewalk this week to share their favorite quotes with the passersby on Pasadena Avenue. Sidewalk chalk is fast, fun, and temporary!



## ELEMENTARY SCHOOL

### ELEMENTARY YEARBOOK ORDERS

Look for the yearbook order form in today's e-packet! Elementary school yearbooks are \$30 each. If you would like an additional yearbook photo slideshow (CD with more photos!) it is \$35 for the bundle. Please complete the order form and submit it with payment to the ES front desk or Business Office no later than Thursday, May 27, at noon. Thank you!

### Y, OH Y!

Musical Kingdom is almost to the end of the alphabet. This week we studied the letter **Y**.

\*We learned how to **y**odel.

\*We ate **y**ogurt and learned many **y**oga positions.

\*We celebrated Cinco de **Mayo** with a nice brunch at Mijares.

\*We learned the Mexican hat dance.

\*We finished reading *Charlie and the Chocolate Factory*. Each child got a real WONKA bar and a pretend Golden Ticket on the day we finished reading the story.

\*We are now reading *The Wizard of Oz*.

\*We played "Guess the Baby!" We looked at our baby photos and tried to match each baby to the current MK-er.

### COFFEE WITH HEIDI

There are still a few spaces left for next Friday's Coffee with Heidi. Heidi will discuss the journey from elementary to high school and describe our upper school program and our progressive approach to a college preparatory curriculum. After, you will have an opportunity to tour our unique high school campus. Interested? RSVP to Alison at [receptionist@thewaverlyschool.org](mailto:receptionist@thewaverlyschool.org) as soon as possible, as numbers are limited. *(The coffee and conversation get together will begin at 9:00 a.m. on the high school campus.)*

## CLASSIFIEDS

### OFFICE SPACE AVAILABLE

Office space for sale or lease in the Castle Green building. Work in a beautiful, historic building, just blocks from Waverly! Go to <http://www.loopnet.com/lid/16589770> or contact Waverly dad Dylan G. at [dgarland1@hotmail.com](mailto:dgarland1@hotmail.com) for more information.

### FREE PLANTS



Free to anyone. Pup plants of large one shown in photo. Can be that big in about 15+ years. Blooms once in life and dies afterwards. Contact Waverly mom Diane W. at [dgbwhiffen@earthlink.net](mailto:dgbwhiffen@earthlink.net) to arrange pick-up.