

67 West Bellevue Drive, Pasadena, CA 91105  
 626-792-5940 fax 626-683-5460  
[www.thewaverlyschool.org](http://www.thewaverlyschool.org)

### DATES TO REMEMBER/THINGS TO DO

- Wednesday, October 20: Class Photos, All School Photo, & Make-Up Photos
- Wednesday, October 20: Waverly Dines Out at California Pizza Kitchen
- Friday, October 22: ES Parent Coffee with Heidi, 9:00 am, HS campus
- Sunday, October 24: Elementary Halloween Party
- October 27, 28, 29: Waverly Book Fair
- Thursday, October 28: Family Literacy Night, 7:00 pm, ES Campus
- Friday, October 29 -Monday, November 1: Parent/Teacher Conferences



## ALL SCHOOL

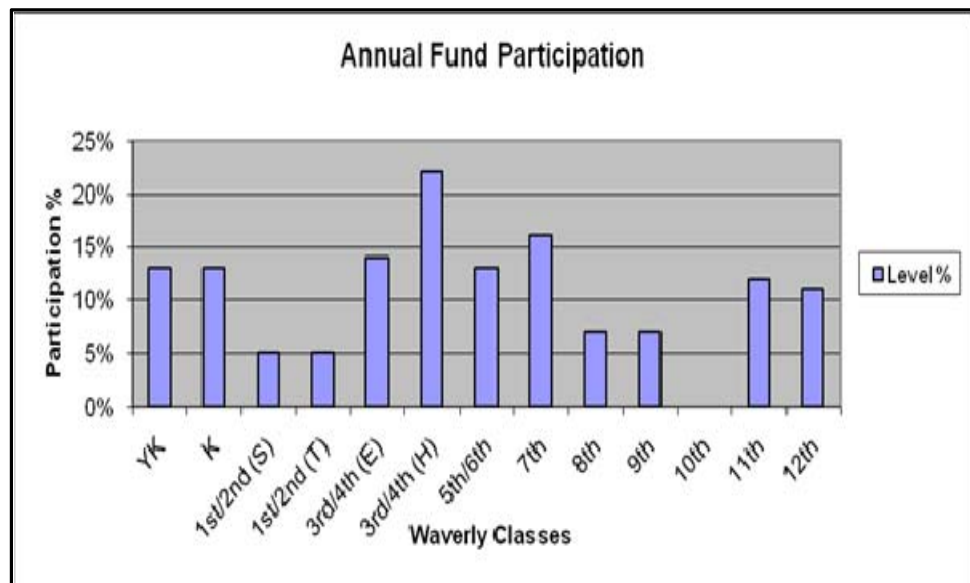
### SNAPSHOT!

Next Wednesday, October 20 will be a "picture perfect" day! All students, faculty, and staff will take the **all school photo**. Students will also take **class photos** on this day. Wednesday, October 20, will also be **make-up** day for students needing to take or retake their individual portraits. Photos will be taken soon after school begins, so please make sure your child arrives to school on time. An order form for both individual pictures and class photos/all school photos went home with your child earlier this week. Questions? E-mail Alison at [alison@thewaverlyschool.org](mailto:alison@thewaverlyschool.org).

### ANNUAL FUND UPDATE

The 2010-2011 Annual Fund is off to a great start! Do you have questions about our annual fund or other ways to help support Waverly? Contact Development Director Kimberly Uribe: [kimberly@thewaverlyschool.org](mailto:kimberly@thewaverlyschool.org).

- Dollars raised as of 10/14/10: \$30,264 (includes pledges)
- Overall family participation to date: 9%
- 2010-2011 Annual Fund Goal: \$275,000 and 100% participation



## WPO

### WAVERLY DINES OUT THIS WEDNESDAY!

Join Waverly families at California Pizza Kitchen (99 North Los Robles in Pasadena) **this Wednesday, October 20** for this month's Waverly Dines Out event. Download the attached flyer and remember to bring it to dinner, because with each flyer turned in, Waverly receives 20% of the total! Busy at dinner time? No worries—the flyer is good throughout the day, so lunch counts, too!

### HALLOWEEN HELPERS STILL NEEDED

The Waverly Elementary Halloween Party (Sunday, October 24) is just one weekend away and your help is needed! If you haven't already, head into the elementary school lobby and sign up for a job. Elementary, middle school, and high school parents are all welcome to help and rack up some parent hours. Are you a pro at sound/music? Do you have a sound system and awesome tunes? Your expertise is most desired! What's a party without music? Also on the wishlist: a few fortune tellers. Actors wanting to practice improv skills, high school students with an amazing imagination—this job is meant for you. Last but not least, there's always room for more able bodies at clean up time. A few more people will make a big difference in how quickly Waverly gets back in order for school the following day! Please sign up today. Questions? Contact Amy: [abancona@gmail.com](mailto:abancona@gmail.com), Jeff: [julielowe@charter.net](mailto:julielowe@charter.net), or Christy: [christyedooley@gmail.com](mailto:christyedooley@gmail.com).

### BOOK FAIR NEWS

The Waverly Book Fair is almost here—October 27, 28, and 29 in the ES community room. Always a highlight of the fall semester, this year's three-day celebration of reading promises to be more vibrant than ever, with twice as many young adult and grown-up offerings as in the past. Keep in mind the Book Fair is the only source of funding for our library for the year, so the more books you buy, the more books Waverly will have. It's good for everybody!



*Ayden W-L. and Cora W.*

### FARM REPORT

There is so much happening at the farm now! The Pollinators (Susan's First/Second) are making corn husk dolls, Mid-Autumn Mooncakes (Cheri's Fifth/Sixth) are preparing to plant their market crop (three colors of cauliflower), and The Traveling Toucans (Marina's Young Kindergarten) are going to plant radishes and arugula in their market plot. The middle school Sustainable Farm class has just planted lettuce, bok choy, Napa cabbage and arugula.

See you at the farm!

### TO MARKET, TO MARKET

Donations to the Waverly World Market can now be dropped off in the marked box in the lobby of the elementary school. Early arrivals have been appreciated! For the World Market to be a truly successful event, the help of every family is needed. Wondering how you can help?

- Come to a craft party at Christy's house – dates will be announced in the *Wave*
- Create crafts and products yourself and/or with a group of friends
- Donate craft supplies – we'd be happy to tell you what we need
- Donate gift cards for the gift card tree

Contact Christy – [christyedooley@gmail.com](mailto:christyedooley@gmail.com) or Samantha – [samanthasackin@gmail.com](mailto:samanthasackin@gmail.com) for more information.

## GREEN SPOT

**Green Halloween:** For the next few weeks, The Green Spot will be devoted to tips and tricks for making your spookfest a greenfest. Boo-lieve it or not, there are many wonderful ways to have a frightfully fun Halloween that are easy and earth friendly.

This Week: Candy and Chocolate

**FACT:** World-wide, chocolate is among the crops most heavily sprayed with pesticides, second only to cotton. Choosing organic, free trade chocolate means eating something that is free from pesticides, you're assured that the cocoa farmer was paid a fair price for his or her crops, and you are helping support more sustainable growing methods.

**TIP:** There is a growing variety of eco-friendly candy, from organic chocolate to organic lollipops, which satisfy the biggest sweet tooth without compromising health or the environment. Brands to look for include Dagoba, Green & Blacks, Newman's Own, and Endangered Species.

**BONUS TIP:** Think treasures instead of candy for your trick or treaters. How about trinkets like spinning tops, stickers and collectable cards? Gifts from nature like polished rocks, crystals and seashells are fun. Glass beads, rings, bells, charms, stamps and coins, fortunes and jokes? Think outside the box!

A reminder about our **Trash-less Lunch Initiative:** The average child in Los Angeles will create about 67 pounds of lunch trash for the landfills every school year! The Green Committee is here to help you and your child reduce that to zero. Please see our Zero Waste lunch supplies and info on the display table in the elementary school lobby.

## MIDDLE SCHOOL

### MIDDLE SCHOOL SANTA BARBARA RETREAT



*After a bumpy bus ride, and a brief wave of relief after taking a sharp turn by the side of the cliff, the Waverly Middle School walked off the bus and set foot in Santa Barbara! After breaking into groups, we all were a little disappointed not to be with our friends, but thanks to the wonderful and energetic staff with Naturalists At Large, we all participated in activities that focused on team work which eventually led to immense trust among the whole student body and teachers. Almost every student participated in the ropes course, which consisted of a variety of different high ropes course challenges. For me personally, the scariest part was knowing that my safety depended upon the students who were standing on the ground holding the rope I was attached to- a complicated and difficult process known as belaying. The counselors simply watched and gave tips to the climber, and were always there in case of an emergency. It was all us, and that for me really made me trust my classmates. We spent a full hour learning about every rope, clasp, knot and buckle, and once you got down from your challenge and adrenaline rush, you couldn't believe that someone you barely knew kept you safe. All the students greatly benefited from living in the beautiful mountains of Santa Barbara. It was a great trip full of laughing, learning, and most importantly, bonding. -Lili C., 8<sup>th</sup> grade*

*Left to right: Toby, Julian M., Max F., Dante N-K; Shelley A. and Camden B.; Vicente S., Maddi H-P., Dante N-K*

## HIGH SCHOOL

### THE DEVIL AND DANIEL WEBSTER

On Thursday, October 21 and Saturday, October 23, the high school drama class presents the exciting one-act play, *The Devil and Daniel Webster* by Stephen Vincent Benét.

There are three performances – two free Thursday daytime performances during school hours for students, and one public performance at 2:00 pm on October 23. Admission to the Saturday performance is \$5, payable at the door.

The audience sits on the grass and, although we have camping tarps to sit on, for maximum comfort the Saturday audience is encouraged to bring low beach chairs, towels, or cushions to sit on. There will be some higher chairs set up at the back.



### TRICK OR TREAT FOR UNICEF



Waverly's High School French Club is once again spearheading "Trick or Treat for UNICEF!" The iconic orange collection boxes will be available at all three campuses through October. Your contribution will provide things like water, education, and medicine to children who truly need it. Please drop your loose change in the orange UNICEF boxes which will be available at the elementary school, middle school, and high school, or take an empty box with you while you trick or treat this year! Once you've collected the money, bring it back to school and The French Club will [send it to UNICEF](#) to help save kids lives! See the attached flyer for more information.

## ELEMENTARY SCHOOL

### ELEMENTARY SCHOOL COFFEE WITH HEIDI

Elementary parents/guardians are invited for coffee and conversation with Heidi Johnson, Head of School, to discuss the journey from elementary to high school. Heidi will describe our upper school program and our progressive approach to a college-preparatory curriculum. Parents/guardians will then have an opportunity to tour our unique high school campus. Interested parents/guardians should RSVP to Alison at [alison@thewaverlyschool.org](mailto:alison@thewaverlyschool.org) for one of the following dates as soon as possible, as numbers are limited. (*All coffee and conversation get-togethers will begin at 9:00 a.m. on the high school campus*)

Coffee and Conversation Dates:

**Friday, October 22**

Friday, December 10

Friday, February 25

Friday, May 20

### CALLING ALL GHOULS ONE MORE TIME!

Waverly's famed Halloween party will be held on Sunday, October 24, from 5:00 to 8:00 p.m. at the elementary school. If you're new to Waverly, you're in for a treat. From the haunted house to the fortune teller's booth, this party is a full-steam-ahead extravaganza!

Reminders:

- It's a **potluck!** Please bring a dinner item to share. We will provide plates and silverware, but for those who want to be green, feel free to bring your own.
- We count on parents for extra **tables and chairs**. Please sign up and bring them to school Friday, October 22, after 3:00 pm or Saturday, October 23, beginning at 9:00 am.
- Bake for the **Boo Bakery!** Make sure you wrap items individually and bring them with you to the party.
- **Sign-up sheets** for jobs are on the bulletin board in the front lobby of the ES campus.

## FIRST ANNUAL CHILI COOK-OFF & PIE TASTING

The Waverly Community Enjoyed Last Saturday's Event!



**Clockwise from top:** Hannah H., Lindsey A., and Claire H.; Gia F., Mike S., Phil L., and Leo S.; Scott F. with Beckett, his little brother, and Derek G. ; a happy group of families; Clay W. and band; Dan and Alex S.