



# THE

# W

# W

# A

# W

# W

## MIDDLE SCHOOL ELECTS COUNCIL

By Katy Fraser, 8<sup>th</sup> grade  
For the past couple of weeks at The Waverly Middle School we have been deciding on our form of student government, and finally we have decided. In the past we have had forms of student government that consist of two representatives, with one for seventh grade and one for eighth grade. We now have a bigger and hopefully better form of government: a student council. A council of five students will help our middle school run. It looks like it will be a successful year for The Waverly Middle School.

Our student council members for the fall semester are Ashley Meek (8<sup>th</sup> grade), Daniel Rosenkranz (7<sup>th</sup>), Angelise Slifkin (8<sup>th</sup>), Sophia Symonds-Futerman (8<sup>th</sup>), and Louis Wallen (8<sup>th</sup>).



The Waverly Middle School fall 2008 Student Council

## CUBAN CULTURE IN H.S. SPANISH

This week the high school Spanish 4/5 class has been reading about, watching films about, and listening to Cuban son music. They read about Ry Cooder, Compay Segundo, The Buena Vista Social Club and many other Cuban artists. The students have also watched the documentary on The Buena Vista Social Club and are listening to both Cuban son and salsa music. They have a written assignment to go along with this cultural information.

## HALLOWEEN PARTY THIS WEEKEND!

Its party time! Don't forget to bring your potluck dish, your individually wrapped boo bakery treats, and money for drinks, treats, glo items, magic rocks and potions. Remember the jobs you have signed up for; check the WPO Job Web site if you can't. See you on Sunday at 5:00 p.m. at the elementary school for lots of spooktacular fun!

## PUMPKINS, GOATS, TRAINS AND THE LETTER G!

The Counting Coyotes went on their first field trip of the year to Lombardi Ranch this week. The weather was a little hot, but we enjoyed ourselves. Lots of parents accompanied us and we are thankful for that!

Here are comments about the field trip shared by some of the Counting Coyotes:

- Sophia: "I saw a fancy scarecrow on the train ride."  
David: "I liked when we petted the animals. I liked the goat."  
Charlotte: "I liked the giant haystack."  
Jamie: "We all went through the maze!"  
Christopher: "I liked when we got to pick our pumpkins."  
Avalon: "I liked the train. It had lots of colors on it."

## Save the Date

**Halloween Party, elementary campus**  
5:00 p.m. - 8:00 p.m.  
Sunday, October 26

**E.S. All School Meeting, E.S. community room**  
9:00 a.m. - 9:30 a.m.  
Wednesday, October 29

**Parent/Teacher Conferences**  
No school; Tom Sawyer & YK care available  
October 30 and 31

**Farm Social at the Waverly Organic Farm**  
Saturday, November 1 at 8:30 a.m.

**Faculty/Staff Appreciation luncheon**  
Friday, November 21

This week, we studied the letter G. We learned the difference between a "hard G" and a "soft G." Gary the goat puppet and Gina the giraffe puppet told stories to the Counting Coyotes. The kids were to raise their hands when they heard a hard G or clap their hands when they heard a soft G.

Albert's dad, Erik, brought his guitar and taught The Counting Coyotes about vibrations and sound. He then played some tunes of different genres: classical, folk and blues.

The coyotes enjoyed the story of *Officer Buckle and Gloria*. They wanted to hear it over and over again. We have been learning about different community helpers, so we brainstormed all of the occupations we could think of and wrote them down on a big sheet of paper.

### SPOOKY SNAPSHOTS

As in years past, Waverly High School parent, Merrily Murray-Walsh, will be taking black and white photos on a first come, first serve basis at the Halloween Party. She will be set up in Melissa's classroom (room 4) during the entire party. Groups of four or less work out best! Time and space are limited. Since we want to take photographs of everyone who wants to participate, we will do just one pose per individual or group. Soon after the day of the party the photos will be on display at school. You will be able to order 4x6, 5x7 and 8x11 prints at a reasonable cost. All proceeds are used to help defray the cost of the film, developing and printing. There is no obligation to purchase any photos, so please come and pose! We really enjoy seeing all of your wonderful costumes!

### "GREEN" FOR HALLOWEEN

Won't you please join in helping to "green up" more of our Waverly events? The easiest and most effective way is to reduce garbage and waste at Waverly events, like at this Sunday's Halloween Party. We are asking everyone who eats at the Halloween Party potluck to bring your own picnic tableware (plates, cutlery, cups, cloth napkins). This is a simple, but extremely

critical way to begin—by keeping things out of the garbage in the first place. Try using your canvas grocery bags to carry everything to the school and back. Bring your own metal water bottles instead of buying single-use plastic bottles. All Trader Joe's, Whole Foods, Target and Fresh and Easy grocery stores sell Preserve—picnic ware made of 100% recycled plastic that is re-usable and dishwasher safe. A complete set of 8 is about \$15. We are trying to avoid Styrofoam, and single-use paper and plastic. Think of the mounds of permanent garbage we'll be preventing! You can also purchase picnic ware made of biodegradable potato starch. Thank you in advance for helping with this effort.

Thanks to Randi Ragan for organizing this green effort for the Halloween Party. Your participation is voluntary and appreciated. Paper plates and plastic utensils will be provided for those who need it and will be disposed of in an appropriate way. Drinks will be sold at the party with all proceeds going to The Waverly School. Our main goal for the party is to have fun and make new Waverly friends! We look forward to a wonderful party, pot luck and Boo Bakery delights, the thrills of the haunted house, the mystery of the fortune tellers, the magic potions and the creative costumes. See you there!

### SPORTS SCHEDULE

#### MIDDLE SCHOOL FLAG FOOTBALL

Monday, October 27 Away vs. Anita Oaks at 3:30 p.m.

Wednesday, October 29 Away vs. Carden at 3:30 p.m.

#### MIDDLE SCHOOL VOLLEYBALL

Monday, October 27 Away vs. Glendale Academy at 3:30 p.m.

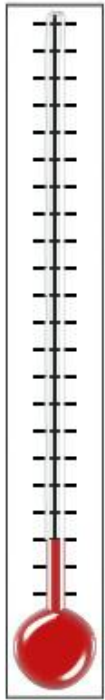
#### VARSITY VOLLEYBALL

Monday, October 27 Away vs. New Harvest Christian at 5:00 p.m.

#### VARSITY VOLLEYBALL

Wednesday, October 29 Home vs. Delphi Academy at 4:15 p.m.

Sports calendars and game addresses are available any time at <http://www.thewaverlyschool.org/sports.html>

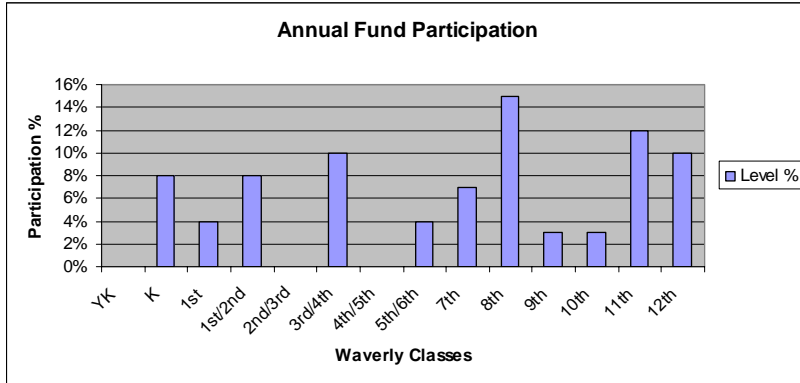


**ANNUAL FUND INFORMATION:  
For the week ending 10/17/08**

2008-2009 Annual Fund Goal: \$275,000  
 Dollars raised as of 10/17/08:  
 \$ 22,369.01 (includes pledges)  
 Dollars raised since last week: \$3,000  
 (includes pledges)

Overall family participation to date:  
 6.137%

Class Participation Bar Graph:



**IN THE SPIRIT OF NATIONAL MAKE A DIFFERENCE DAY**

All are invited to the Waverly Organic Farm on Saturday, November 1 at 8:30 a.m. to see what is happening this year and to meet some new friends. Bring your ideas, tools, kids and gloves. Share some food, thoughts and fun!

Contact Donna Furey with questions:  
[donnaurey@gmail.com](mailto:donnaurey@gmail.com).

**Community Service Corner**

**Volunteer at the Pasadena Museum of History.** They offer volunteers a unique opportunity to use their skills, interests and enthusiasm. The museum matches volunteers with assignments that interest them and that are at a convenient time. Visit:  
<http://www.pasadenahistory.org/volunteer/index.html#info>

**Reading Partners is a non-profit organization dedicated to empowering students through literacy and investing community members in underserved public schools.** Visit their site to volunteer:  
<http://www.readingpartners.org/>

**FACULTY/STAFF APPRECIATION LUNCHEON**

We are still in need of food for the Faculty/Staff Appreciation Luncheon on November 21, 2008. This is a great opportunity to say thank you to our hard working staff and faculty. If you would like to contribute a dish, whether it be appetizer, salad, main dish, dessert, wine, sparkling water or diet soda, please e-mail Meg Bradbury at [megbradbury1@yahoo.com](mailto:megbradbury1@yahoo.com) or Maureen Pinsonnault at [jmpinson@earthlink.net](mailto:jmpinson@earthlink.net). Thank you!

Maureen Pinsonnault  
 Luncheon Co-Chair