

THE STARRY NIGHTS—ART SMART

This week, the Starry Nights are learning about Jackson Pollock. He is considered to be one of the greatest artists of the twentieth century, best known for his huge splatter paintings. His style is often called Abstract Expressionism, but he preferred to call his style Action Painting. Pollock's paintings are filled with energy, expression, movement and rhythm. The Starry Nights have learned about Pollock's life, experimented with his techniques and tried some splatter painting on large paper.

ELEMENTARY SUMMER PROGRAM DISCONTINUED

For a variety of reasons, The Waverly School will no longer offer a summer program for elementary students. The administration and Board carefully considered the impact this decision has on the school and its families. With the growth of the school, the amount of summer work, including facilities improvement and maintenance, has increased significantly. Discontinuing the elementary summer program will ensure that this work can be successfully completed and the school will be exceptionally well prepared for the start of a new year in the fall. Summer classes will continue to be offered to our middle and high school students; look for information posted in *The Wave* and on our Web site in early 2009. We recognize that there are Waverly families who will need to make alternate summer arrangements for their children due to this decision, and we hope the timeliness of this announcement will be of assistance.

Parents and guardians interested in learning more about summer programs in our area should plan to attend the Westridge summer options event on Saturday, February 7, 2009 from 10:00 a.m. until 4:00 p.m. A variety of programs will be represented at different price points.

MIDDLE SCHOOL STUDENTS VOTE IN MOCK ELECTION

On Tuesday, November 4, Waverly Middle School students cast their ballots in a mock election. Over the past several weeks, the seventh and eighth graders examined the platforms of the major Presidential candidates and participated in debates about California's ballot initiatives. The results of Tuesday's mock election are shown below:

CANDIDATE	% of VOTE
Obama	78.2%
McCain	9.1%
McKinney	7.3%
Nader	3.6%
Barr	1.8%
Keyes	0%

MEASURE 2	% of VOTE
Yes	89.1%
No	10.9%

MEASURE 8	% of VOTE
Yes	5.6%
No	94.4%

Save the Date

Waverly World Market Craft Days
Elementary School, 10:00 a.m. to 2:00 p.m.
Sunday, November 9 and Sunday, Nov. 16

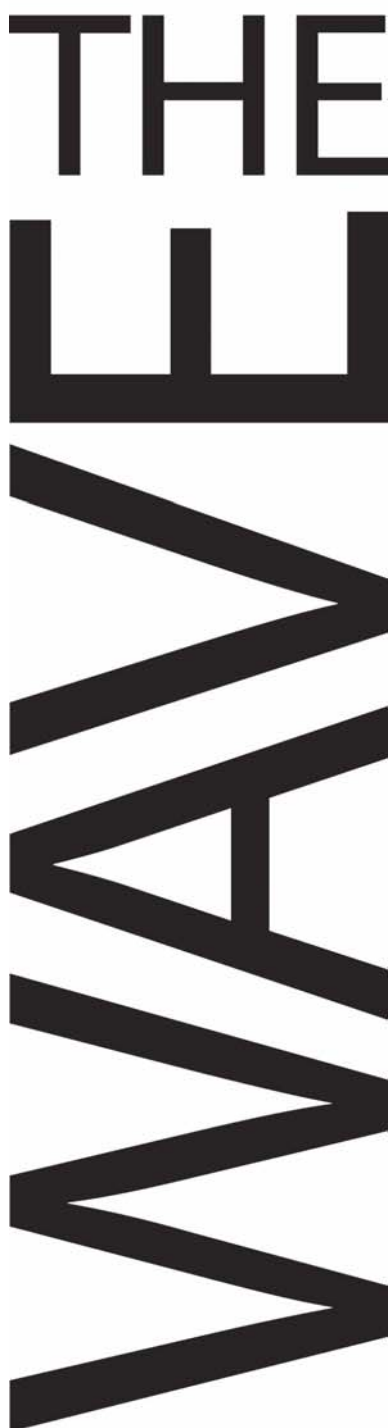
Jon Scieszka visits Waverly, 9:30 a.m.
Tuesday, November 11

Eighth Grade Parent Night
At The Waverly High School, 7:00 p.m.
Wednesday, November 12

The Crucible
Performed at Waverly High School, 12:00 p.m.
Saturday, November 15

Sixth Grade Parent Night
Wednesday, November 19

Faculty/Staff Appreciation Luncheon
Friday, November 21



FACULTY/STAFF APPRECIATION LUNCHEON

The Faculty/Staff Appreciation Luncheon will be held on Friday, November 21. Many thanks to all of the parent volunteers who have already signed up to donate a dish or to work at the luncheon. Several teachers have already informed me how much they are looking forward to the event. We will be sending reminder e-mails to everyone next week.

Please help us make this year's luncheon special. We are still in need of main dishes and are desperately in need of beverage donations. We need wine, beer, sparkling water or soda. If you would like to contribute, please e-mail Meg Bradbury at megbradbury1@yahoo.com or Maureen Pinsonnault at jmpinson@earthlink.net. All donations will need to be dropped off at the elementary school building at 9:30 a.m. on November 21.

Thanks again,
Maureen Pinsonnault
Luncheon Co-Chair

AUTHOR VISITS WAVERLY

National Ambassador of Young People's Literature and best-selling author **Jon Scieszka** will visit The Waverly Elementary School on Tuesday, November 11. The elementary classes will hear him speak in the Community Room at 9:30 a.m., and parents are welcome to join us. Jon has over 30 books, including *Stinky Cheese Man*, *Smash! Crash!*, *Time Warp Trio* series, *The True Story of the 3 Little Pigs*, and his latest in the *Trucktown* picture book series for ages 3-8, *Melvin Might*. Bring your Jon Scieszka books as there will be time for book signing. Maureen Palacios from Once Upon a Time Bookstore will also be in the elementary school lobby on November 11, from 8:15 a.m. to 9:30 a.m., as well as after Jon's presentation, selling (checks only) the author's books. If you are unable to attend and would like Maureen to reserve a book with Jon's signature for

you just send her an e-mail at maureen@onceupon.com.

ES LIBRARY CORNER

It's been another great month for reading in The Waverly Elementary School Library. Here are highlights of what our elementary students are reading:

- Skyler Sulkis (Melissa's class) is on his fourth book in the *Secrets of Droon* series.
- Matthew Dean (Tina's class) is finishing up the *Catwings* series.
- Darby Pak (Cheri's class) is reading *Inkdeath*—the 3rd book in Cornelia Funke's series.
- Desmond Weisenberg (Erin's class) is working his way through the *Encyclopedia Brown* series.
- Carson Becker (Mike's class) has completed the first book in Meg Cabot's new *Allie Finkle* series, and is almost finished with the second book.
- Ruby Elliott (Susan's class) is enjoying Junie B. Jones' adventures

Stay tuned for more updates in the coming weeks.

THE WAVERLY HIGH SCHOOL PRESENTS *THE CRUCIBLE*: NOVEMBER 14 AND 15

The high school drama class is proud to present Arthur Miller's *The Crucible* as its first show of the 2008-2009 season. *The Crucible* is a play based on the actual events in 1692 that led to the Salem Witch Trials, a series of hearings before local magistrates to prosecute over 150 people accused of witchcraft in colonial Massachusetts. The play was written in the early 1950's by Miller during the time of McCarthyism, when the U.S. government blacklisted accused Communists.

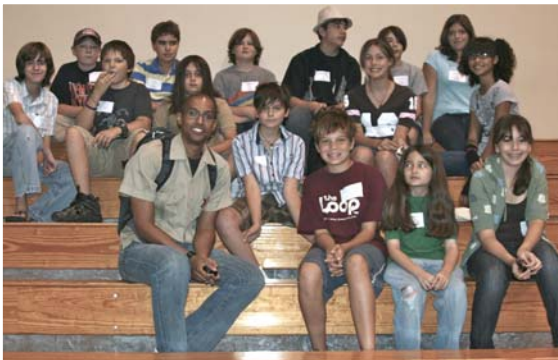
The production takes place outdoors on the grassy lawn of Webster Quad at the high school. There are three performances—two free performances during school hours for students of the high school and middle school on

Friday, November 14, and one public performance, at noon on Saturday, November 15. Admission to the Saturday performance is \$5-payable at the door.

The audience sits on the grass and, although we have camping tarps to sit on, for maximum comfort the Saturday audience is encouraged to bring low beach chairs, blankets or cushions to sit on! The play runs approximately 2 hours and 20 minutes. We hope to see you there!

M.S. DEBATE TEAM PREPARES FOR THEIR FIRST TOURNAMENT

On Saturday, September 27, Waverly's Middle School Debate Team participated in a workshop at LaReina High School. This Saturday, our Debate Team will compete in their first



tournament. Six students will represent Waverly at the Curtis School Debate Invitational. Many more members of the team will be there to help them prep and to cheer them on. Go Ravens!

FARM REPORT

Despite a small turnout for the farm work day/social this past weekend we got a lot taken care of. The weather was gloriously cool and we experienced a few sprinkles as we



worked. Tools and trash were gathered from far and wide, waste materials and corn husks were rounded up and placed in the compost bins and our shed was cleaned and

organized. Just a reminder: the rule for the shed is that it holds items that should not stay out in the rain, such as tools that could rust. Hoses, ceramic pots and sheets of plastic are stored in the metal cart next to the shed. Trash

must be taken back to school. Even though there is a trash can at the farm, we have no pick-up service there. Our most amazing feat was the re-location of the mulch pile off the meadow to a



spot under the mulberry tree. The grass on the meadow can now fill in and the mulch is available for use by all gardening families. A big thank

you goes out to the mulch shovelers, Ed Dunn and Richard Neil (pictured above). Well done, guys!

WORLD MARKET NEWS

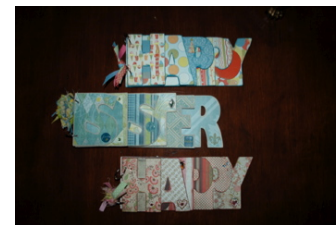
This Sunday, November 9, will be the first of two Waverly Craft Days held at



the elementary school campus from 10:00 a.m. to 2:00 p.m. Come



help make products for the World Market, learn a craft or just be part of a the fun. We



will be making Anybuddy Dolls, friendship bracelets, tie pillows,

sock monkeys, dried flower frames and more! If you are working on a project for the Market and need some labor to get it done, this would be the place! No experience needed—we will teach you. Kids are welcome! Bring scissors, white thread and a needle if you have it.

A donation box will be placed in the lobby on Friday. Please place any

products you are donating to the World Market there. We would love to have all products turned in by Thanksgiving so that they can be inventoried and priced. Thank you!

A BIG WAVERLY THANK YOU

Thanks so much to Eve Kikawa and Anne Stabolepszy for taking the huge task of organizing the Halloween Party under their wing again this year. They have been so creative and dedicated and have made the Halloween Party a wild success year after year. Also, thank you to Christy Dooley for coordinating the Boo Bakery. Waverly thanks you!

HALLOWEEN PARTY: THANK YOU

The coordinators of the Halloween Party would like to thank all the wonderful parents and students that made the party a big success. To those of you who came on Friday to hang the black drapes, then on Saturday to decorate the hallways, create the Haunted House, move the tables, brought their personal tables, decorate the potions area, decorate the swings, sew the geodesic dome cover, decorate the sand graveyard, create the fortune teller tents, decorate tables, make the centerpieces, buy drinks, magic rocks and glo-items, and on Sunday to take photos, play music, bring Boo Bakery goodies, bring Halloween feast items, work the jobs at the party from Haunted House characters to fortune tellers to drink sellers, to food wranglers, and to all the great clean-up workers who stayed late on Sunday, we say, "You're the best!" We hope all children and adults enjoyed the party and we look forward to next year's event.

HALLOWEEN PHOTOS

Did you have your portrait taken at last month's Halloween Party? Merrily Murray-Walsh will have photos on display in the elementary school lobby beginning Monday. Come and see your photo and grab an order form. You may order 4x6, 5x7 or 8x11 prints at a reasonable cost.

GREEN HALLOWEEN

Our first Green Garbage effort went very well The Halloween Party! Thank you to all who participated by bringing your own table ware, and to those who donated to help offset the cost of the initial purchase of our tree-free BioSmart Biodegradable table ware (made from potato starch, corn, and sugar cane stalks).

While we're on the subject of garbage, here is an interesting list of items and their "break-down" time once they reach the landfill or their final resting place.

BioSmart table ware	3 months -1 year
Cotton rags	1-5 months
Orange peels	6 months
Wool socks	1-5 years
Plastic coated milk and juice paper cartons	5 years
Leather shoes	25-40 years
Nylon fabric	30-40 years
Aluminum cans	80-100 years
Batteries	100 years
Plastic 6 pack rings	450 years
Plastic bottles	450 years
Glass bottles	1 million years

The above chart is taken from the Biosmart Web site: <http://www.biosmart.ca/> (which cites the Environmental Protection Agency for information).

ART LESSONS: DRAWING, WATERCOLOR & SCULPTURE

Art classes are being offered to students in grades 2 through 6, by Waverly's 3rd & 4th grade teacher, Erin Palfrey. Classes are held Mondays and Wednesdays from 3:15 p.m. to 4:30 p.m. as a four-week session. Classes begin on November 17 and continue on the following dates:

11-19-08

12-01-08

12-03-08

12-08-08

12-10-08

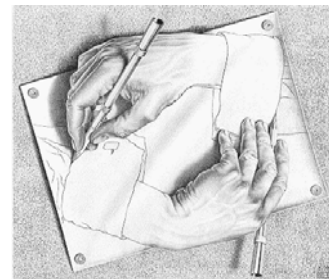
12-15-08

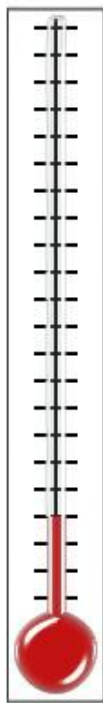
12-17-08

The cost is \$100.00,

pre-paid cash.

You can reach Erin at 626.403.5994.





\$275,000

ANNUAL FUND UPDATE

For the week ending 10/31/08

2008-2009 Annual Fund Goal: \$275,000

Dollars raised as of 10/31/08:

\$39,307.01 (includes pledges)

Dollars raised since last week: \$14,188
(includes pledges)

Overall family participation to date:
9.025%

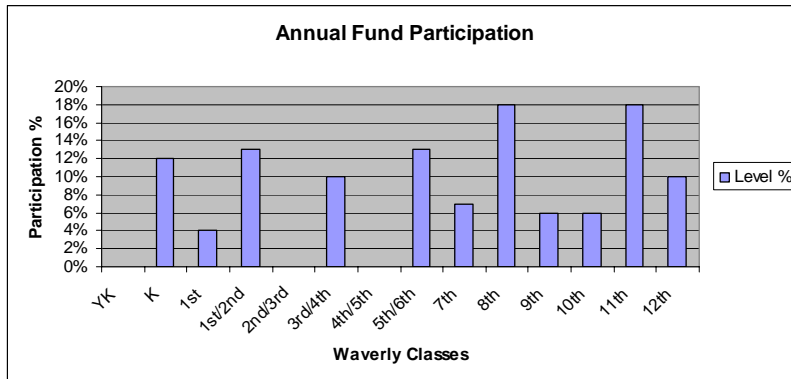
\$39,307.01

\$0

The Support Waverly link is up and running on the main page of our school Web site. Just click on the Support Waverly link and fill out the form!

Class Agents have also begun calling on behalf of the Annual Fund.

Class Participation Bar Graph:



FRESHLUNCHES

Freshlunches provided the elementary parents and high school students with a tasting on Friday, October 24.

Freshlunches provides lunches

Mondays through Thursdays and offers an extensive selection of healthy hot and cold meal items. All meals are served to students on-site and come individually packed. Parent and guardians can order lunches online at www.freshlunches.com or phone 818.904.3478. Orders must be placed by midnight the Friday prior to the week you want your child to receive lunch.

DECLINE CATALOGS, SAVE TREES!

I wanted to pass on a great way to decline catalogs on the Internet. If you are like me and get ill every time you go to the mailbox and find it filled with paper catalogs, visit the link below to cancel them!

It is so easy to set up your account and also to set up your different names in the address book (e.g., Mauve Michaels, Ms. Mauve Michaels, Mr. Frank Michaels). Then go to Find Catalogs, type in the catalog name, follow the prompts and CATALOG CHOICE does the rest. I feel good every time I sit down at the computer and get a stack of those tree killers declined.

<http://www.catalogchoice.org/#welcome>

Happy Holidays,
Lynn Dean

TIME FOR NOVEMBER SCRIP

Last month's scrip order was a huge success. We raised over \$200 for Waverly in just one order! Now is a good time to start thinking about the upcoming holidays. In the November order you may want to keep in mind places where you may buy food for Thanksgiving, like Marie Callendar's, Coco's Restaurant & Bakery, Honey Baked Hams and the various markets. If you are traveling, get some gasoline cards or hotel cards. Gift cards make great holiday gifts. Scrip is a one-stop shopping place and you help out The Waverly School at the same time! (If you ever need to purchase more than \$400 worth of scrip, call me and a special order can be placed for you.)

Dottie Snitzer, WPO Treasurer
626.796.8777 or 626.449.4300
wk2much4u@yahoo.com

YARD SALE FOR KIDS, TO SUPPORT THE ANNUAL FUND

Our family is having a yard sale called "Everything for Kids" on Sunday, November 9, from 9:00 a.m. to 2:00 p.m. We have books, toys, furniture—you name it—all in great condition. Our Waverly High School son, Nico

Walsh, has accumulated a great selection of things to recycle. We will donate 25% of all of our sales to The Waverly School Annual Fund. We are located just 15 minutes from school in Toluca Lake. Our address is 4408 Mariota Avenue, and we are between Riverside Drive and Moorpark Avenue. We are just a few blocks from the Burbank Bob's Big Boy restaurant. In addition, if you are an Edward Gorey fan, you may enjoy seeing our Halloween yard display, "The Evil Garden."

Tom and Merrily Walsh
818.766.1624